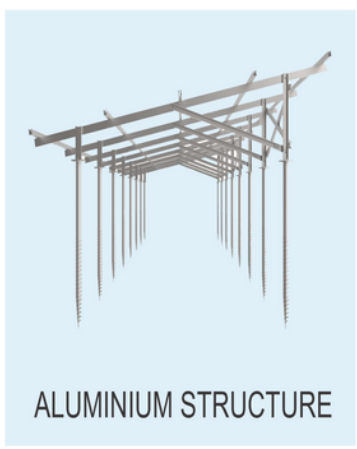




Harvesting.
Storing.
Empowering.

Our product



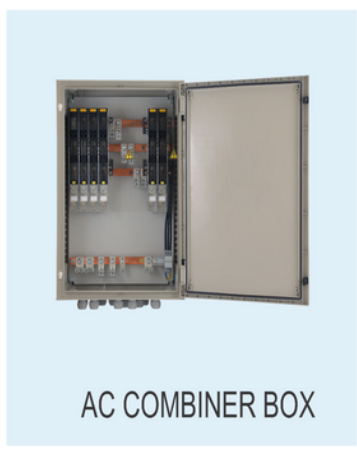
ALUMINIUM STRUCTURE



INDUSTRIAL ELECTRICAL



DCDB(DC DISTRIBUTION BOX)



AC COMBINER BOX



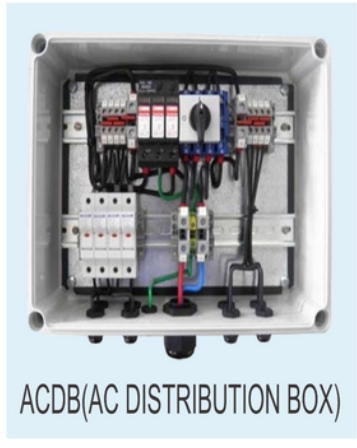
CABLE ACCESSORIES



UV CABLE TIE



SS CABLE TIE



ACDB(AC DISTRIBUTION BOX)



CABLE LUGS



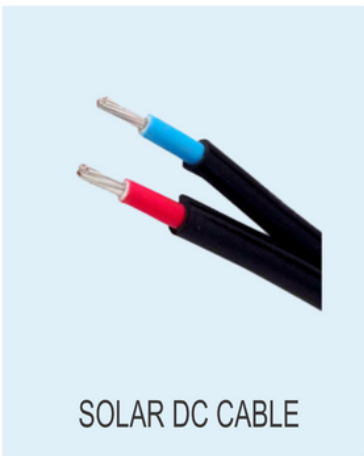
DMC INSULATOR



HEAT SHRINK KIT



Mc4 CONNECTOR



SOLAR DC CABLE



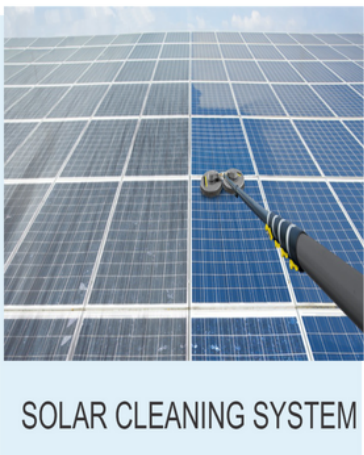
AC SPD



DC SPD



POLYCARBONTE BOX IP-65/67



SOLAR CLEANING SYSTEM



PIPE & CONDUIT



UV FELEXIBLE CONDUIT PIPE



AC COMBINOR BOX



BIRB REPELEENT



CHEMICAL EARTHING



DC FUSE



LIGHTING ARRESTOR(LA)



TOOL BOX



EARTHING STRIPS



REMOTE MONITORING SYSTEM



SOLAR DG SYNCHRONIZING



FERULS0-9 A-Z



G-I SADDLE



EARTHING STRIP SADDLE



PVC TAPE



GITTI PATCH



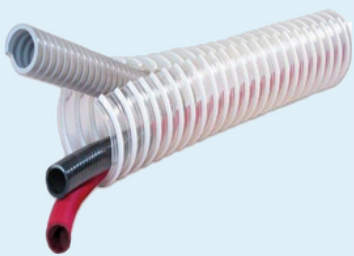
FIRE EXTIGUISTION



FIRE BUCKET WITH STAND



NUT-BOLT



BATTEN FOR PROTECTING



ZINK SPARY



COTTON TAPE



PU FORM



ANTI CORRESIVE PAST



INSULATION MAT



EARTH TESTER



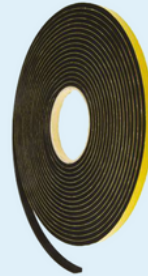
SS DOUBLE COMPRESSION



WELDING MACHINE



FASTNER



EPDM TAPE



SILICON SILENT



FISSHER CHEMICAL ANCHOR



RJ 45 CONNECTOR



D-LINK CAT WIRE



SAFETY TAGS



DANGER BOARD



SAFETY CHART



SAFETY EQUIPMENT



Power Control Centre (PCC) / Main LT Panel

We offer PCC panels (power control centre panel) which are used for diverse industrial applications and provide reliable and effective service.



Auto Manual Transfer (AMT) Panel

Our organization is engaged in manufacturing top quality AMT control panels. These panels are available in various models and sizes as per clients' specifications.



Power Distribution equipments/Power

Power Distribution Equipments or Power Distribution Board is used for Electrical Power Distribution.



Motor Control Centre (MCC) Panel

The MCC panel offered by us is widely demanded by various industries for distribution of power, main incoming and motor control panels.



AC / DC Drive Panel

We are engaged in manufacturing and supplying of variable frequency drive (VFD) panels can be adjusted according to the speed of



Automatic Power Factor Correction Panel

For the purpose of power correction and prevention of loss of energy, we provide a highly efficient range of Automatic Power Factor Correction (APFC) Panel.

DCDB/AJB

Array Junction Box (AJB) also known as DCDB (Direct Current Distribution Box), component of an electricity supply system which divides an electrical power feed into subsidiary circuits, while providing a protective fuse or circuit breaker for each circuit. DCDB controls the DC power from Solar Panels and with having necessary surge protection device (SPD) and fuses to protect the solar panels strings and solar inverter from any type of damage. All switches at the circuit breakers, connectors confirm to IEC 60947, part I, II and III.



AC DISTRIBUTION BOX (ACDB)

The ACDB (Alternative Current Distribution Box) receives the AC power from the solar inverter and directs it to AC loads through the distribution board. ACDB includes necessary surge protection device (SPD) and MCCB to protect the solar inverter from any type of damage or heavy voltage. Specifications of ACDB may change as per load or inverter capacity. ACDB provided at the cable terminating point emanating from Solar Inverter for interconnection control of dedicated electrical loads.



MC4 Connector

MC4 connectors are single-contact electrical connectors commonly used for connecting solar panels. The MC in MC4 stands for the manufacturer Multi-Contact and the 4 for the 4mm diameter contact pin.



SOLAR DC CABLE

Our Solar Cable is basically used in photovoltaic power generation. It interconnects solar panels and various other electrical components in the photovoltaic system. UV and weather resistant, this cable can be used in large temperature range. As a durable and strong, this 4 Sq. Mm. And 6 sq.mm Solar Cable is mainly widely used for outdoor ground & roof mounted systems. To fulfill the different requirements of industries, we are able to provide this cable in different lengths and sizes. Our customers can purchase this cable from us at market leading rates.

Features: Electron beam cross linked XLPO insulation
TUV Certified
120 Deg. C Temperature.



POLYCARBONATE BOX IP65/IP 67

An electrical enclosure is a cabinet for electrical or electronic equipment to mount switches, knobs and displays and to prevent electrical shock to equipment users and protect the contents from the environment.

Fibox Polycarbonate Enclosures
Trinity polycarbonate enclosures
HANSEL POLYCARBONATE ENCLOSURE



DC/AC surge Protection Device SPD

We are a leading Wholesale Trader of Mersen DC Type 2 1000V SPD surge Protection Device, 1000V DC Surge Protection Device, Three Phase Surge Protection Device, Single Phase Surge Protection Device and Elmex DC SPD Type 2 1000V Surge Protection Device from New Delhi,

Mersen DC Type 2 1000V SPD surge Protection Device
1000V DC Surge Protection Device
Three Phase Surge Protection Device
Single Phase Surge Protection Device



DC ISOLATOR SWITCH

We are a leading Wholesale Trader of Telergon DC Isolator Switch from New Delhi, India.

- Telergon DC Isolator Switch



Cable Gland

Leading Wholesale Trader of PG Cable Gland and Brass Cable Gland from New Delhi.

- PG Cable Gland
- Brass Cable Gland



Solar PV DC Fuse

Offering you a complete choice of products which include Mersen PV DC Fuse Holder and HP10M 1000V DC Midget Photovoltaic Fuses

- Mersen PV DC Fuse Holder
- HP10M 1000V DC Midget Photovoltaic Fuses



Cable Jointing Kits

Pioneers in the industry, we offer Raychem RPG Kit Outdoor Cable Jointing Kit, Raychem RPG Cable Jointing Kit Indoor and Raychem RPG Cable Jointing Kit from India

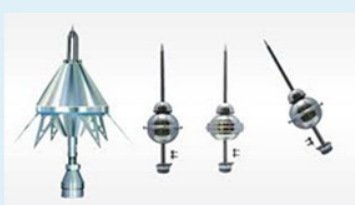
- Raychem RPG Kit Outdoor Cable Jointing Kit
- Raychem RPG Cable Jointing Kit Indoor
- Raychem RPG Cable Jointing Kit



Lightning Arrestor

Prominent & Leading Wholesale Trader from New Delhi, we offer Conventional Lightning Arrestor and ESE Lightning Arrestor

- Conventional Lightning Arrestor
- ESE Lightning Arrestor(photo)



Terminal Blocks

Our range of products include Terminal Blocks.

- Terminal Blocks



Earthing Pit Cover

Leading Wholesale Trader of Earthing Pit Cover from New Delhi.



UV Cable Tie

Wholesale Trader of a wide range of products which include Stainless Steel Cable Tie and Nylon Cable Ties.

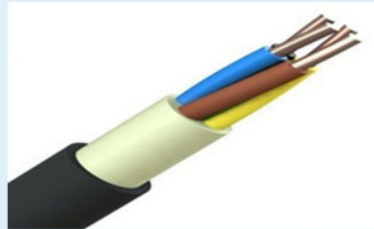
- NYLON Cable Tie
- STAINLESS STEEL Cable Ties



AC Electric Cable

Wholesale Trader of a wide range of products which include LT XLPE Cables, Polycab Flexible Cable, Armoured Cable, Aluminum Cables and Aluminium Armoured Cable

- LT XLPE Cables
- Polycab Flexible Cable
- Armoured Cable
- Aluminum Cables



MCCB Switchgears

Offering you a complete choice of products which include L&T MCCB and Miniature Circuit Breaker.

- L&T MCCB
- Miniature Circuit Breaker



Cable Trays

Our product range includes a wide range of Perforated Cable Tray GP Sheet.

- Perforated Cable Tray GP Sheet



CABLE LUGS / BIMETALIC LUGS

Cable lugs, also referred to as Cable terminal ends or cable shoes are electrical supplies utilized to securely connect or terminate cables to electrical devices, power or control panels, junction boxes, equipments and machineries. These lugs are often used to join power cables together



FRP INSULATOR

Fibre-reinforced plastic (FRP) (also called fiber-reinforced polymer, or fiber-reinforced plastic) is a composite material made of a polymer matrix reinforced with fibres. The fibres are usually glass (in fibreglass), carbon (in carbon-fiber-reinforced polymer), aramid, or basalt. Rarely, other fibres such as paper, wood, or asbestos have been used. The polymer is usually an epoxy, vinyl ester, or polyester thermosetting plastic, though phenol formaldehyde resins are still in use.



BIRD REPELEENT

Bird repellent which is used ultrasonic waves to repel the birds from site. It is the world's first ultrasonic bird control device particularly designed for year-round utilization in semi-encased open air territories. Ultrasound is almost quiet to people, so you can successfully dispose of pigeons & other feathered creatures while keeping up an agreeable environment for clients and representatives. Most ultrasound just works inside, yet this pigeon control product is effective enough for utilization inside medium-measured semi-wrapped outside territories. This ultrasonic bird & pigeon repellent has proven to be extremely effective and versatile.



EARTHING GI STRIP

A earthing strip is a block of electrical sockets that attaches to the end of a flexible cable (typically with a mains plug on the other end), allowing multiple electrical devices to be powered from a single electrical socket. Power strips are often used when many electrical devices are in proximity, such as for audio, video, computersystems, appliances, power tools, and lighting. Power strips often include a circuit breaker to interrupt the electric current in case of an overload or a short circuit. Some power strips provide protection against electrical power surges. Typical housing styles may include strip, rack-mount, under-monitor and direct plug-in.[1]

Category: Our Products Tags: EARTHING GI, EARTHING GI STRIP, GI STRIP



UV FLEXIBLE CONDUIT PIPE

Flexible conduit is used to protect cable and wire from direct sun contact and other environmental effects. Intermediate metal conduit (IMC) is a steel tubing heavier than EMT but lighter than RMC. It may be threaded. Electrical metallic tubing (EMT), sometimes called thin-wall, is commonly used instead of galvanized rigid conduit (GRC), as it is less costly and lighter than GRC.

Right—conduit does not equal cable. However, sometimes flexible conduit is a constituent part of cable. To put it another way, sometimes flexible conduit and individual conductors are prefabricated into cable. For example, the cladding of metal-clad cable is equivalent to flexible metal conduit (FMC).



CONDUIT & PIPE

- HDPE PIPE
- CPVC PIPE
- UPVC PIPE
- CPVC PIPE
- PVC PIPE



HEAT SHRINK KIT

Heat-shrinkable means just that, heat them up and they shrink, or more correctly, they recover in length. A heat-shrinkable sleeve starts out with a thick extruded poly olefin sheet (polyethylene or polypropylene) that is formulated to be cross-linkable. After extruding the thick sheet, it is taken to the “beam” where it is passed under a unit that subjects the sheet to electron irradiation.[2] The irradiation process cross-links the polyolefin. This improves the molecular structure such that the polyolefin will work as part of a heat-shrinkable sleeve and provide the required level of mechanical protection while in-service.



MECHANICAL CONNECTOR

Mechanical connectors are used to join electrical connections together. We can use these connectors to join many electrical connections in one connector without any interruption.

Benefits of using a mechanical connector include:

A self-aligning taper-threaded design provides continuity and structural integrity. Spliced bars behave as continuous lengths of reinforcing steel bars by providing full strength in tension and compression and stress reversal application.



REMOTE MONITORING SYSTEM

This monitoring system is the most powerful of the Wattmon range of embedded data logging and control devices. This version has several I/O lines on-board, making it easy to develop intelligent machine automation applications in addition to performing data logging.

Power Requirement:

WattmonMEGA can run on a DC power source between 6 and 60V DC. It has a built in high efficiency switching buck regulator that ensures that it consumes less than 2 watts of power without accessory devices. The device can be shipped with an AC adapter or a DC power cable to be directly connected to your battery bank of up to 48V DC.

Connectivity:

WattmonMEGA has two ways of connecting to the Internet. The built-in 100 Mbit LAN can be connected directly to a laptop or router, and is used for setup and local monitoring. The USB Host port works with a selected number of USB Cellular dongles, allowing both outbound and inbound data via the Internet. Although we provide instructions on configuring your local dongle, not all of them work. Need a compatible USB dongle for remote monitoring? Use one of our Huawei dongles, the E303F or E3531 for 2G/3G and or the E3372 for 4G

SOLAR CLEANING SYSTEM

A cleaning system is a phenomenon whereby dust is removed from solar panels, specifically only on exploration and science rovers on Mars, supposedly by the action of wind. The term cleaning system is used on several webpages; generally supposing that Martian winds have blown dust clear off the probes on Mars, including the solar panels which power them, increasing their energy output. The nature of the cleaning events is not known, but the assumption is that wind blows the dust off the panels. Cleaning events were discovered when several times power levels increased by 5% over night, and in contrast to the expectation they would decrease—the added power allowed the missions to continue beyond their expected lifetime. One theory is that wind currents in craters aids in cleaning events, and also if the rover is sloped, this is speculated to help remove dust. Another idea is that the Martian whirlwinds are what sweeps the dust off.



SOLAR DG SYNCHRONIZATION

Synchronization is the process of matching the speed and frequency of a generator or other source to a running network. An AC generator cannot deliver power to an electrical grid unless it is running at the same frequency as the network.

Zero Feed-In – Dynamically reduce the output from inverters to limit power for captive consumption, & enforce zero export of energy.

DG Protection – Control the active power of the inverters and optimize the energy generation to protect multiple diesel generator sets.



TOOL BOX

A toolbox (also called toolkit, tool chest or workbox) is a box to organize, carry, and protect the owner's tools. They could be used for trade, a hobby or DIY, and their contents vary with the craft of the owner.

Small portable toolboxes are sometimes called hand boxes or portable tool storage.

Most portable toolboxes have one handle on top and a lid that opens on a hinge. Many have a removable tote tray that sits on a flange inside the lip of the box, with a single larger compartment below. The tote tray helps organize smaller



CHEMICAL EARTHING

Earthing Resistance which we measure is the resistance between the earth rod and the associated soil. Earth electrode (copper / steel) can't dissipate the fault current until the associated soil suck the current.

The dissipation capacity of soil is called Soil resistivity. If the soil resistivity is higher then it will offer more resistance to current. To improve the resistivity if the soil we treat the associated soil with different methodologies prescribed in IEEE 80 – Clause 14.5 a to 14.5 d.

